

## TECHNICAL RIDER

TENT circustheater producties

Zinzi & Evertjan



---

## Minimum requirements and needs concerning:

For technical and productional questions please contact Cahit Metin [cahit@tent.eu](mailto:cahit@tent.eu) | +316-22204834.

### 1. Performance

- 'MEMO' is a circus performance that is played indoor. The performance needs a clearly marked play area, so there will be no audience on the floor during the performance.

### 2. TENT arrives with:

- 2 artists
- 1 technician

### 3. Duration

- The duration of the performance is 35 minutes.
- It's possible to program two performances per day. There should be a minimum of two hours between the end of the first performance and the beginning of the second performance.

### 4. Requirements of the venue

- Ideal floor space of 8 x 8 m. This has to be a levelled, firm and flat floor.
- The performance 'MEMO' is performed on a black dance floor. This dance floor is arranged by the organization (we do not bring it ourselves).
- The floor space needs to be free of irregularities and obstacles.
- The minimum height above the whole floor needs to be 6,5 meter, free height under grid.
- There needs to be a black backdrop and black wings or side drops.

### 5. Build-up and breakdown times

- Build-up time is necessary to build the scenery and set the light. The required time is depending on the situation at the venue, available equipment and the amount of work that has already been prepared. A minimum of 2,5 hour is at least needed. Arrival is in consultation with the local technicians.
- The performers need 1,5 hours of preparation time on stage, after the build-up is finished.
- Breakdown time is 1 hour.

### 6. Dressing room

- The artists need a dressing room close to the performance space.
- In the dressing room the minimum requirements are chairs, tables, a mirror and a shower.

### 7. Parking

- In case the artists and technician arrive by cars, parking spaces need to be arranged. In case of a paid parking situation, payment is on the account of the organization.

---

8. Catering

- During the stay of the group, tea, coffee, water and some small refreshments for 3 persons are appreciated.
- During the stay of the group, and if agreed upon, lunch and dinner for 3 persons is appreciated (NOTE: 2 vegetarian – no meat, no fish)

9. Lodges

- When we perform on a location for multiple days, from which it is impossible to drive up and down to Amsterdam, we expect hotel rooms arranged by the organiser.
- 3 single rooms

10. Light

**The lighting installation is provided by the contractor.**

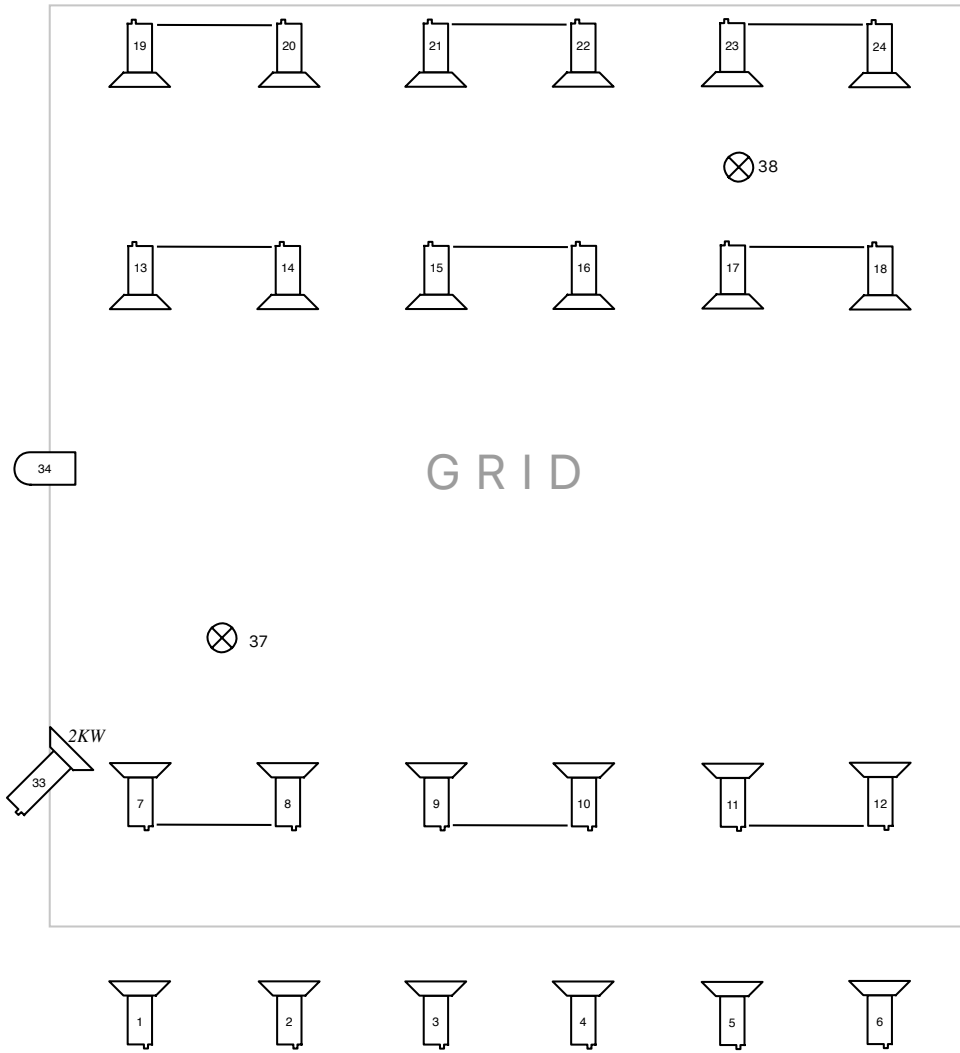
11. Sound

- **The sound installation is provided by the contractor.**
- We use the venues:
  - PA installation with 1 stereo channel (computer 3,5mm jack) and 1 channel for a microphone
- Microphone (preferably a wireless handheld) with microphone stand.
- Monitor on stage

12. Decor

- On several places, light bulbs are hanging down from the grid above the stage. These points are part of the lighting plan, and need to be dimmable on the lighting desk (numbers 37 and 38 in the drawing)
- On the floor, there are also a couple of these points. These points are also part of the lighting plan, and need to be dimmable on the lighting desk.
- In the performance, a candle in a jar is being lit. The candle is lit and extinguished a couple of times during the performance. Match sticks are used to light the candle.
- In the lighting plan drawings, the various light bulbs from the lighting plan are marked with the symbol ⊗

LIGHTING PLAN



**IN GRID**

- |         |             |                   |   |
|---------|-------------|-------------------|---|
| # 1-6   | - 1st front | - Fresnels - 119# | - group, total shower whole floor, sharp cut on edges |
| # 7-12  | - 2nd front | - Fresnels - 119# | - group, total shower whole floor, sharp cut on edges |
| # 13-18 | - 1st back  | - Fresnels - OW   | - group, total shower whole floor, sharp cut on edges |
| # 19-24 | - 2nd back  | - Fresnels - OW   | - group, total shower whole floor, sharp cut on edges |
| # 33    | - 2KW       | - Fresnel - L205  | - over diagonal, wide focus on floor front to back    |
| # 34    |             | - PAR64           | - focussed on the roof, for orientation acrobats      |
| # 37&38 |             | - light bulbs     | - part of decor                                       |



FLOOR			
# 25-28	- side left	- Profiel - 119#	- group, two by two crossed, just above floor till roof
# 29-32	- side right	- Profiel - 119#	- group, two by two crossed, just above floor till roof # 35
		- 1KW	- Fresnel - OW
# 36	- ballet tower-	Profiel - OW	- over diagonal, wide focus from floor till back drop
# 39-42		- light bulbs	- focussed on #41
			- part of decor